

CALENDAR

september

27 SUNDAY

Putney - Lesbian Book Group: 7 PM at Heartstone Books. We read books in all genres, by women authors, usually with some lesbian content. Please join us! For more information, Tatiana (802) 387-2781, or tatianas@sover.net.

28 MONDAY

Burlington - BLT (bisexual, lesbian, transgender women's) Health Network will be meeting at the Peace and Justice Center at 7:00 PM. Come visit us, join us, participate in the development of health information and help for the health of BLT's in the state of Vermont. For further info: phone: Lanny 899-4588, or Joy 848-7037.

october

3 SATURDAY

Johnson - Hiking and Fried Green Tomatoes Planning Meeting. FMI: 802-635-9770.

4 SUNDAY

Burlington - UU CIRCLE: Full Moon ritual, potluck, and meeting. All who support the Covenant of UU Pagans' mission are welcome. Wear garb if you like, and bring something for feast, a musical instrument, and a cushion to sit on. HC accessible. First UU Society of Burlington, 152 Pearl St., 6 pm. Donations. Info, 658-9689.

MIDDLEBURY
NATURAL

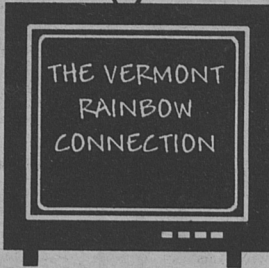
FOODS
CO-OP

A full service,
natural
foods store
specializing in
healthy, whole,
organic foods
and products

IN THE
HARVEST
LIES OUR
DELIGHT

1 WASHINGTON ST
MIDDLEBURY
1-802-388-7276

BECOME A SPONSOR!



HELP SUPPORT
THE SHOW THAT
SUPPORTS YOU!

THE T.V. SHOW BY, FOR AND ABOUT
VERMONT'S L/G/B/T COMMUNITY AND
OUR SUPPORTERS!

"Become a Sponsor and show your support!"

call or write for rates and Sponsorship/Donor
information:

(802) 849-2739

Lavender Visions Productions, Inc.

PO Box 307

Saint Albans, Vt. 05478

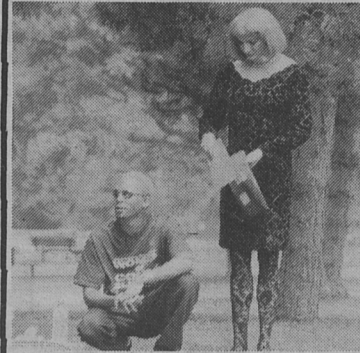
email: lavender@together.net

Lavender Visions Productions, Inc. is a non-profit 501(c)(3)
organization and all contributions are tax deductible

TV
GAYS

OITM Edition

Cherie & Yolanda...



Tue 10pm, Sat midnight, Sun 11pm
Adelphia channel 15 in Burlington, call
local Adelphia cable and request to
see the show in your area

The Vermont Rainbow
Connection

- Adelphia (Ch 15) (Greater Burlington area) Fridays 9pm
- Adelphia (Ch 15) (Montpelier, Waterbury, Randolph) 2nd & 4th Fridays 7:30pm
- Lake Champlain (Ch 2) (Colchester area) 1st & 2nd Mondays 11pm 1st & 2nd Wednesdays at 10pm
- Helicon Cable (Ch 7) (Barre) 2nd & 4th Mondays 8:30pm
- BCTV (Ch 8) (Brattleboro) call (802) 257-0888 for airing days/times
- MMCTV (Ch 3) (Richmond, Jericho, Underhill) call (802) 434-2550 for airing days/times
- WENO (Ch.15) (Enosburg, Berkshire, Richford) 1st & 3rd Sundays 8pm

Questions About
the Internet?
We have answers.

Call us to find out how you
can get on-line. And feel free
to take notes ...



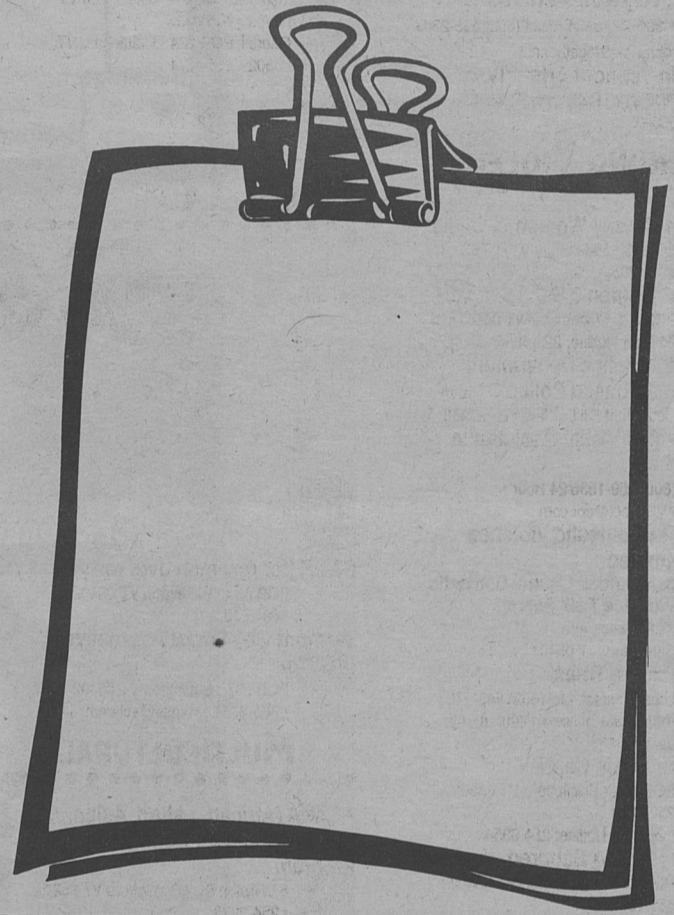
Together
NETWORKS

www.together.net

802-860-5164

800-846-0542

info@together.net



Curbside

Melancholy, Baby ©1998 BY ROBERT KIRBY



BY ROBERT KIRBY

