

Health Resources

All phone numbers (802) unless noted.

HIV/AIDS HOTLINES

Vermont: (800) 882-2437
 New Hampshire: (800) 752-2437
 New York State: (800) 541-2437
 Massachusetts: (617) 522-4090
 Maine: (800) 851-2437
 National: (800) 342-2437
 National TTY: (800) 243-7889
 Teen Hotline: (800) 234-TEEN

Addison County AIDS Network (ACAN)

352-6679 or 388-4193

AIDS Community Awareness Project (ACAP)

PO Box 608 • St. Johnsbury VT 05819 • 748-1149

AIDS Community Resource Network (ACoRN)

PO Box 2057 • Lebanon NH 03766 • (603) 448-2220
 or (800) 816-2220 • E-mail: acom@valley.net

ALANA Health Care Organization

PO Box 357 • 179 S. Winooski Street • Burlington
 VT 05402 • 864-2631 or 864-2632

Bennington Area AIDS Project

PO Box 1066 • Bennington VT 05201 • 442-4481 or
 (800) 845-2437

Brattleboro Area AIDS Project

PO Box 1486 • Brattleboro VT 05302 • 254-8263 or
 254-4444 (Helpline) • E-mail: sbell@sover.net

Comprehensive Care Clinics (for HIV/AIDS)

Hotline: (800) 763-2460
 Brattleboro: 257-8860
 Burlington: 656-4594
 Rutland: 747-1831
 St. Johnsbury: 748-7361

Dawnland Center (Native American)

PO Box 1358 • 121 Barre St. • Montpelier VT 05601
 229-0601 • E-mail: Nadrumin@aol.com

Gay/Lesbian Alcoholics Anonymous

PO Box 5653 • Burlington VT 05402 • 658-42

Lesbian Cancer Support Group

660-8386

Men's Health Project (see Vermont CARES listing)

National Association for People With AIDS

(202) 898-0414

NH/VT HIV Information Network on the Web

<http://www.dartmouth.edu/~hivnet/>

North Star Holistic Health Care

RR2 Box 3255 • Morrisville VT 05661 • 888-2858

Tribal Remedies (ALANA Community Organization)

8 Williston St. • Brattleboro VT 05301 • 254-2972

Twin State Women's Network

PO Box 3 • Cavendish VT 05142-0003 • 226-7807
 E-mail: margoc@mail.tds.net
 Web Site: <http://www.dartmouth.edu/~hivnet/orgs/TWSN1.html>

Vermont AIDS Council

PO Box 275 • Montpelier VT 05601 • 229-2557
 E-mail: vtaids@plainfield.bypass.com

Vermont CARES

PO Box 5248 • Burlington VT 05401 • 863-2437 or (800)
 649-2437
 PO Box 6033 • Rutland VT 05702 • 775-5884

Vermont Deaf AIDS Project

PO Box 172 • Brattleboro VT 05302 • (800) 257-1123
 (TTY); (800) 253-0195 (Voice Relay);
 (802) 257-2013 (Fax)

Vermont Department of Health

108 Cherry St. • PO Box 70 • Burlington VT 05402
 AIDS Program Office: 863-7245
 AIDS Hotline: (800) 882-2437

Vermont HIV/AIDS Care Consortium

PO Box 9 • Hinesburg VT 05461 • 482-5100

Vermont HIV/AIDS Education Network

PO Box 1784 • Burlington VT 05402-1784 • 862-1668

Vermont Office of Minority Health

c/o VT Dept. of Health (see above) • 863-7273

Vermont People With AIDS Coalition

PO Box 1055 • Brattleboro VT 05302 • 229-5754 or (800)
 69-VT-PWA • E-mail: vtpwac@sover.net
 Web Site: <http://www.sover.net/~vtpwac/>

Vermont Women's Health Center

336 North Ave. • Burlington VT 05401 • 863-1386

*New group? Change of address?
 To update, correct or add any information included in
 the resource and
 health resource listings, please
 e-mail information to
 OITM@together.net*

CHASSMAN & BEM



Open
7 days

Special
orders
welcome

We are proud to carry the area's
largest selection of gay, lesbian,
and bisexual books and magazines.

81 Church St., Burlington, VT

802-862-4332

1-800-NEW BOOK

Antiques, Collectibles, and Vermont Handcrafted Creations

McCleary Brook Antiques and Gifts

Route 14 HC 65, Box 2320 Albany, Vermont 05820
 One mile north of Albany village.

Open year round
Thursday-Sunday 10-6
Or by appointment or chance.

David and Louanne Nielsen
(802) 755-6344

BLACKWOOD

AND

KRAYNAK P.C.

ATTORNEYS AT LAW

Eileen M. Blackwood
Pamela Kravnak

- Employment law
- Education law
- Wills, Relationship Contracts
- Commercial & Residential Real Estate
- Small Business

131 Main Street

P.O. Box 875

Burlington, VT 05402

(802) 863-2517

Michael's Seafood and Steak Tavern

LUDLOW'S PREMIERE DINNER HOUSE

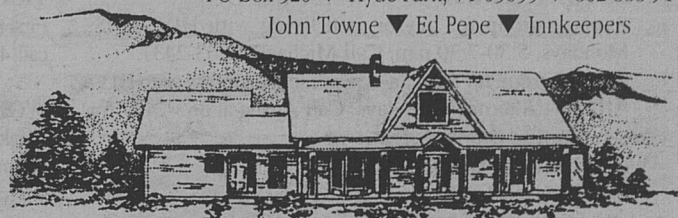


Route 103 • Ludlow, Vermont • 802-228-5622
 Visit Our Web Page: <http://www.sover.net/~seafood1>

Arcadia House ▼ Elegant Accommodations

PO Box 520 ▼ Hyde Park, VT 05655 ▼ 802-888-9147

John Towne ▼ Ed Pepe ▼ Innkeepers



25 acres ▼ pond ▼ meadows ▼ trails ▼ river ▼ peace & privacy

Michael Gigante, Ph.D.

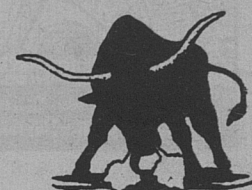
Psychosynthesis
Counseling & Therapy

(802) 254-8032 15 Myrtle Street, Brattleboro VT 05301

RAINBOW CATTLE CO.

Lasso yourself some
fun at Southern Vermont's
only gay bar!

Drink Specials, Great Shows,
Latest Dance Music



Route 5 Brattleboro Between Exits 3 & 4, 191 (802) 254-9830

Tami Eldredge, Outright VT's new executive director

CONTINUED, from page 1
 its new youth space, Xando, which will
 open as a weekly drop-in center in July.

Access to services is another area
 Eldredge hopes to give focus to. Isolation
 is at the top of her list when asked about
 GLBTQ youth issues. Their website, youth
 'zine "Reaching Out," 800 number, and
 new pen pal program are some ways the
 agency is working to link young people to
 services and to each other. Social pressures
 and a lack of dependable transportation can
 otherwise keep many Vermont youth from
 getting to Outright's Burlington office in
 the first place.

Eldredge also plans to do more
 reaching out, proactively getting
 educational messages to queer youth and
 to the community at large. She plans to
 continue working with schools and other
 youth serving agencies to provide as broad
 a base of support as possible. "Faggot is
 still the most common epithet in school
 hallways," she says, also pointing out a
 recent study showing that GLB students in
 Vermont were seven times more likely to
 have been threatened or injured with a
 weapon at school. This, she says, happens
 in spite of Vermont's relatively high
 receptivity to the needs of GLBTQ youth.
 "Schools are hostile and unsafe," she says,
 "That's a need for us to fix." Eldredge
 cites Montpelier High School as an example
 of what schools are capable of doing. She
 made several visits there this Spring, going

beyond the usual one-shot homophobia
 training. The school also invited Outright to
 make presentations to health and sexuality
 classes, and to participate in a speaker's panel
 at a school town meeting. Says Eldredge,
 "They're really a good example of what
 schools can do...incorporating information
 about who GLBTQ people are [and] what
 their lives are like."

On the business end, plans include a major
 donor campaign to bring the agency into a
 better financial balance. "We've been heavily
 dependent on grants," she says, "We're
 moving toward distributing that more
 evenly." In addition to cash donations,
 Outright also seeks to fill a wide variety of
 volunteer positions, for adults and youth.
 The group currently has a volunteer base of
 60 group facilitators, administrative
 volunteers, and organizers.

With the challenges of relocating and
 starting a new job, Eldredge has found time
 for little else. While she's been impressed
 with what she describes as a diverse, active
 and interesting community professionally,
 she looks forward to making more personal
 connections. Eldredge tells a quick story
 about coming home one day last winter to
 find that her elderly neighbor had shoveled
 the walk for her. "I thought that was
 fabulous. It was so delightful to have a
 stranger looking out for me." It's a case of
 giving what she's getting. As the new face
 on the block, Eldredge is doing the same
 thing for Vermont youth every day.