

Patty Larkin In Burlington

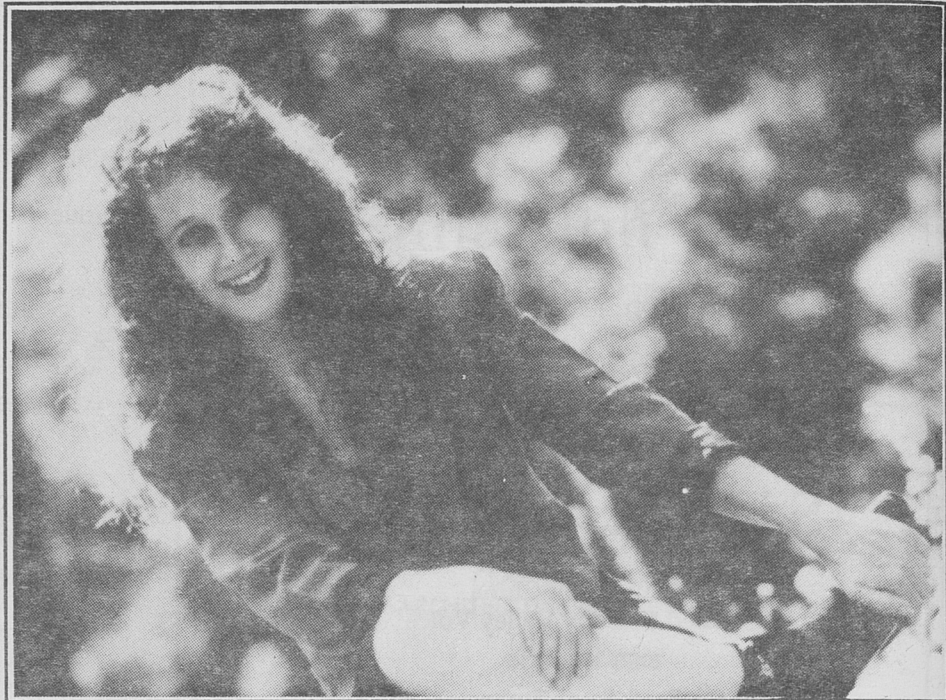


Include us in
your celebration of
men who love men and
women who love women.

RICHARD CORBETT FLOWERS

9 Center Street
Burlington
864-0376

"One of the three best florists
in New England"
New England Monthly Magazine



Kathy Bouton

Photo by John F. Cooper

Patty Larkin will be making her first ever Burlington appearance on Thursday, January 7th at City Hall Auditorium at 7 pm as a benefit for the Peace & Justice Coalition and the Burlington Women's Council. Opening for Patty will be Vermont's own talented blues-folk artist, Anne Weiss.

as Middlebury's Festival on the Green to last summer's Ben & Jerry's Newport Folk Festival. Each performance is wonderfully intimate, funny, inspiring and immensely satisfying. I can't say enough wonderful things about Patty Larkin. So come out and see and hear her; if you're not a fan already you will be after this.

Making her home on Cape Cod, Patty Larkin tours throughout New England as well as across the United States and Canada. Drawing from her four albums, *Step Into the Light*, *I'm Fine*, *Live in the Square*, and most recently *Tango*, along with new songs not yet recorded, Patty Larkin shares a wealth of politically poignant, intelligent, humorous, As well as wise and thoughtful love songs. I have seen her perform in concerts as diverse

Tickets will be available at the Peace on Earth Store, 21 Church Street, Burlington. \$10-\$15 sliding scale. For more information call 863-8326.

Patty Larkin will also be at the Peace on Earth Store, Thursday from 1-3 pm signing her compact discs and cassettes. ▼

Questions?

Call the
Gay/Lesbian/Bisexual
Youth Info-Line
1 800-GLB-CHAT

Outright VT
Youth Group Meeting
Sunday 2-4 pm

TELEPHONE (802) 524-9595

CAROL L. THAYER, M.D.
FAMILY PRACTICE

OFFICE HOURS
BY APPOINTMENT

R. D. 2, BOX 1160
FAIRFAX, VERMONT 05454

Lynn Goyette, M.S.Ed., M.A.C.P.
Feminist Counseling and Psychotherapy

Lesbian & Gay Affirmative
Individual • Couple • Group Work

860-6360

Rm. 3E
Richardson Place

2 Church St.
Burlington, VT