

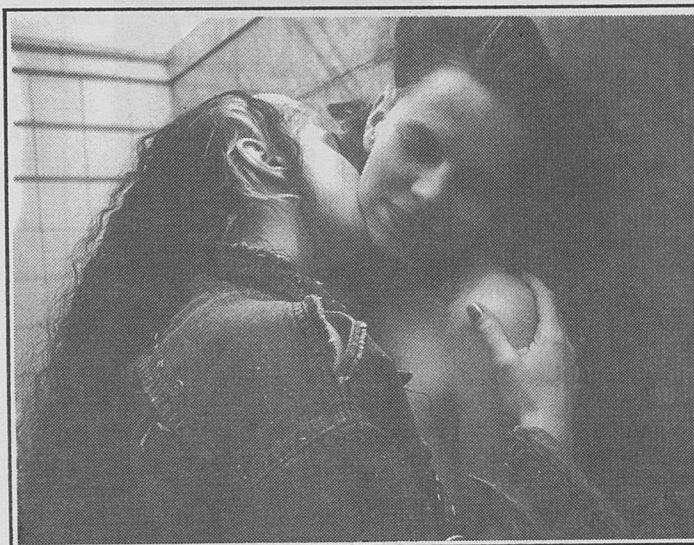
Drawing the Line Comes to Northampton

Drawing the Line is an interactive photography exhibit that explores issues of censorship and sexuality. One hundred black and white (11x14) photographs of lesbian sexuality form a series, ranging from least to most controversial. The viewer is asked to comment on the images and "draw the line" where they set their limits regarding sexual imagery.

The comments form part of the piece. Women mark their comments directly on the wall. Men's comments are in a book mounted near the end of the photo series. The book contains prints of the photographs (3x5) in the order they appear on the wall, with room for longer commentary. Men's and women's voices are separate in acknowledgement of our historically different relationship to sexually explicit images. The resulting dialogue -- among men, among women, between the models -- is multi-leveled.

Censorship is an ongoing contentious issue in many communities. In a time of increasing pressure on artists and galleries, mounting the show is a statement by the gallery itself, and puts the show in a pointed context. *Drawing the Line* does not prescribe answers, but does raise questions. Is there a line you can draw? Would crossing it put you on the "other side" of the debate? How do you decide?

Drawing the Line is a production of Kiss & Tell, a collective of three Vancouver, B.C., artists. The same two women (Per



Drawing the Line- lesbian sexual politics on the wall

photo
Susan Stewart

simon Blackbridge and Lizard Jones) are the models in all the photos. Photography is by Susan Stewart.

Drawing the Line has appeared in cities like Sydney, Toronto, Los Angeles and San Francisco. It will be shown at the A.P.E. Gallery at Thorne's Market in Northampton, MA, from April 24-May 18. It is being brought to Northampton by Wild Kat and WOW Productions, producers of the Northampton Lesbian Festival.

Lea Delaria will emcee *Sex and Art*, an international celebration of lesbian sex and art, in an afternoon fund-raising per

formance for *Drawing the Line*. Susie Bright, former editor of *On Our Backs*, will perform her *State of the Union Address for Lesbians*, and the Kiss & Tell Collective (creators of *Drawing the Line*) put lesbian sexual politics center stage with *True Inversions*. Video, slides and live performance combine for a multi-media event that is hot, political, playful and challenging. Sunday, April 26, at 2 p.m. at the Academy of Music in Northampton. Tickets for *Sex and Art* are \$17.00. Available at Food for Thought in Amherst, Prides in Northampton, and the Northampton Box Office in Northampton; or by phone at 1-800-THE-TICK. ▼

Where to Find OITM

- | | | | |
|-------------------------------------|---------------|-------------------------------------|----------------------|
| Bennington Free Library | Bennington | Project EXCEL, Lyndon State College | Lyndonville |
| Brattleboro Food Coop | Brattleboro | Northshire Bookstore | Manchester Center |
| Cahoos | Brattleboro | Middlebury Natural Food Coop | Middlebury |
| Common Ground | Brattleboro | Bear Pond Books | Montpelier |
| Everyone's Books | Brattleboro | Horn of the Moon Cafe | Montpelier |
| Burlington College | Burlington | Woman Centered | Montpelier |
| Chassman & Bem | Burlington | Morristown Centennial Library | Morrisville |
| Fletcher Free Library | Burlington | Moore Free Library | Newfane |
| Partners in Recovery & Growth | Burlington | Northeast Kingdom AIDS Coalition | Newport |
| Peace & Justice Center | Burlington | Brown Public Library | Northfield |
| Pearls | Burlington | Social Alternatives for Gay Men | Norwich |
| Planned Parenthood | Burlington | Woman's Study Program | Plainfield |
| STEP Learning Center | Castleton | Putney Library | Putney |
| Craftsbury Public Library | Craftsbury | Kimball Public Library | Randolph |
| Rutland Area Gay/Lesbian Connection | E. Middlebury | PFLAG | Rutland |
| Innwood Manor | East Barnet | Rutland Free Library | Rutland |
| Greenhope Farm | East Hardwick | LUNA/NEVGALR c/o Umbrella | St. Johnsbury |
| Fair Haven Free Library | Fair Haven | Natural Provisions | St. Johnsbury |
| Buffalo Mountain Coop | Hardwick | Regional Library | St. Johnsbury |
| Galaxy Books | Hardwick | St. Johnsbury Athenaeum | St. Johnsbury |
| Jon's Automotive | Lyndonville | Food for Thought | Stowe |
| | | WRJ Books | White River Junction |