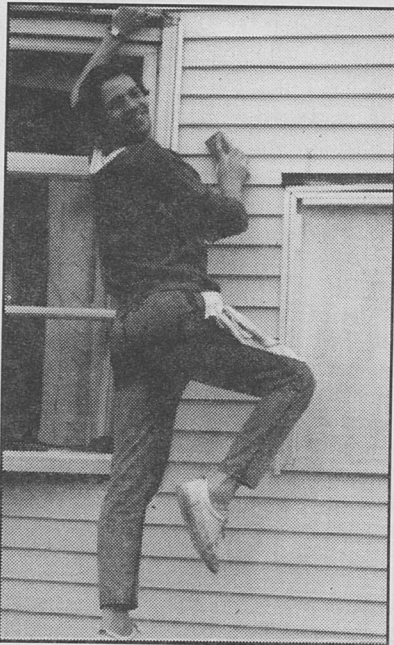


In Memoriam: To our beloved friend and sister Ron Conner



We will miss your non-stop energy, more energy than 12 people combined. We will miss your antics behind the bar and in front of it. Your enthusiasm for Pearl parties that always got this place going. Your infamous 4th of July hot dog lady look, your yards and yards of crinoline as Scarlett. Your love of drama and expression, your outfits to mirror your mood. Those out of control cranberry cocktails, a different outfit every minute. Your endless creativity. Your kindness. Your capacity to love from the smallest of children to the oldest of adults. You were a

worker that could be counted on and a loyal friend. Your ability to get along with such a wide variety of individuals, not to mention your honorary Lesbian status. You were a kind and gentle soul who had your very own twist on life. The joy of having known you. Your presence will be sorely missed. We will treasure you, your spirit will always be with us.

Ron passed away on November 22, 1994. The above was written by Nancy Barnett. ▼

New Location:

PATRICIA J. NOLL, M. A.

Licensed Clinical Mental Health Counselor

88 Main St.
Middlebury, VT 05753

(802) 388-0933
(800) 286-6933

03-95

Quite Simply...

The finest collection of
Furniture, Carpeting & Accessories
in Vermont

Rutland House Ltd.

162 south main street
rutland, vermont 05701

(802)775-2911



rts. 11/30 - in the heart of
manchester center, vermont

(802)362-2001

from all over vermont: (800)649-2911

Fights The Right

Continued from page 1

and current VCLGR co-liaison Thomas Fleury, and Gary Kowalski of Burlington's Unitarian Universalist Church. Alfano highlighted the recent election results where 60% of candidates supported by the right-wing Christian Coalition won election in state, local, and national races. Eade discussed the Right's impact on Vermont school boards including Winooski where a spirited community debate resulted after Vermont CARES and Outright were invited to participate in Winooski High School's Awareness Week celebration. Fleury discussed legislative initiatives, like domestic partnership legislation, that the Right may target in Montpelier. Gary Kowalski read an editorial he wrote for the *Burlington Free Press* where, after the recent assassination of a physician in Florida, he outlined his fear surrounding Operation Rescue's protests of Planned Parenthood.

Sue Hyde of NGLTF explained that the loosely organized right-wing agenda includes attacks on lesbians, gay men, welfare recipients, immigrants, public education, libraries, the environment, sex education, and reproductive rights. Hyde added that the right-wing takeover of Congress and many city councils and State Houses creates a climate inhospitable for advancing gay, lesbian, and bisexual civil rights.

A number of workshops were held after the panel discussion and opening remarks. Kathy Bonilla and State Representative Sandra Baird facilitated discussions regarding editorial politics. Sue Hyde and Buzz Harris from NGLTF led workshops around movement building. Outright's Karin Eade discussed education and Burlington Human Rights Council member Hugo Martinez led a forum addressing coalition building. Useful sessions regarding fundraising and media were facilitated by Rita Markley of the Committee on Temporary Shelter (COTS) and CCTV Director Lauren Glen-Davitian.

After a day of brainstorming and networking, Sue Hyde's question to the audience was, "How do we build a stronger movement, broader in its base and deeper in its roots?" According to seminar participants, one answer is education through seminars like the one sponsored by the Burlington Women's Council. As summarized by Hyde, "Only through an organized and vocal movement can the Religious Right be defeated." As Burlington Women's Council Executive Director Peggy Luhrs stated, "Appeasement of bullies only encourages them more. We need to speak out as never before." ▼

Montpelier
229-5220

Burlington
860-6360

JOSIE JUHASZ, M.A.
Lic. Psychologist - Master

LYNN GOYETTE, M.S., M.A.
Lic. Clinical Mental Health Counselor

sliding fee scale

insurance accepted



COUNSELING CENTER OF NORTHERN VERMONT