

**Chiltern Mountain Club.** Outdoor sports and recreation organization for gay men and lesbians. Steering committee is Boston-based, but membership is spread all over New England. Call the info-line recording at (617) 859-2842, or write to Chiltern Mountain Club, PO Box 407-V, Boston, MA 02117-0407 for more info.

**Central Vermont P-FLAG.** Meets the third Sunday of the month at 1 pm at the Unitarian Church, 134 Main Street, Montpelier. Meet in the second floor chapel (please use the School St entrance) Call 479-9246.

**L.I.L.T. Lesbians in Long Term Relationships.** A monthly social gathering of lesbian couples. Leave Message for Lupe at (802) 655-6825.

**Gay/Lesbian Alcoholics Anonymous** meets Thursday evenings at 7 p.m. at St. Paul's Cathedral, Cherry St., Burlington.

**HIV/AIDS Drop-In Support Group.** Wednesdays 1 pm-2 pm at Vermont C.A.R.E.S., 30 Elmwood Ave, Burlington, VT. Call 863-2437 or 1-800-649-2437.

**G.A.L.E. Network.** support group for gay, lesbian, bisexual educators. Meets during the school year in the Northampton/Amherst area. PO Box 930, Amherst, Ma. 01004-0930 or call Face-to-Face (413) 253-3054.

**Lake Champlain Chapter PFLAG** (Parents and Friends of Lesbians and Gays) meets at 2 p.m. on the second Sunday of each month at First United Methodist Church (corner of S. Winooski & Buell). For information, call 863-4285 or 658-3961.

**Lesbian/Gay/Bisexual/Ally Marching Band.** Get your marching band instrument out of the closet and join the fun at Vermont's Lesbian, Gay and Bisexual Pride March on Saturday, June 4, 1994. Please call Peter at 878-1123.

**Lesbian/Gay/Bisexual Overeaters Anonymous.** meets Thursday evenings at 7pm at Unitarian Church, Burlington.

**Lesbian/Gay/Bisexual Psychotherapists.** Regular meetings. Contact Bill Lippert at 482-3528 for info and dates.

**Lesbian/Gay/Bisexual Potluck** Second Sunday of each month. First Unitarian Church. Burlington, 152 Pearl St. Meet in the upstairs parlor at 12:30 p.m. following the service. (All welcome, whether or not you attend the service).

**New England Lesbian and Gay Journalists Association** New England Chapter of National Lesbian and Gay Journalists Association. Network for lesbian and

gay journalists to meet and discuss common professional concerns. For more information contact Michelle Johnson (617) 524-0518.

**OUTRIGHT VT Social Support Groups** meet Fridays 7-9 pm in Burlington. GLB youth (under 23) welcome to attend. Call for location and information. 865-9677.

**OUTRIGHT VT's New Women Only Group** meets every Tuesday 7-8:30 pm in Burlington at the Outright office. Call for more information. 865-9677.

**The Rutland Area Gay/Lesbian Connection (RAGLC)** A support and social organization for the Rutland area gay and lesbian community. See the Calendar listings for upcoming events. If you would like more information about our group, please write to: RAGLC at PO Box 218, Center Rutland, VT 05736.

**Rutland-Manchester P-FLAG** (Parents & Friends of Lesbians & Gays) meets every third Sunday at 2:00 pm at Grace Congregational Church, West St. Rutland. call Julie or Peter Cooper at 773-7601 for information.

**S.A.G.E.** (Senior Action in a Gay Environment) Gays & Lesbians over 50. Call Robert Zeuner, 658-5136 for date & time of meeting.

**Stonewall Climbers** Mountaineering and caving club. For more info write: Stonewall Climbers, PO Box 445, Boston, MA 02124.

**VT-ISEE - Incest Survivors Enlightened & Empowered** - Survivor-run organization; publishes a newsletter every other month & offers resource & referral services. For more info write PO Box 82, Milton, VT 05468-3525.

## Submitting a Letter

*OITM* welcomes letters to the Editor and will withhold your name or use your initials or first name only on request. However, we must have your full name and address for our files if we are to print your letter. Letters may be edited for length or clarity. ▼

**Vermont Lesbian & Gay Parents** - Monthly Sunday Pot Luck Brunch. See the Calendar listing for dates. Call 660-2713 for location and more info.

**Vermont PWA Coalition** - Monthly Board Meeting on the second Monday of each month at 6pm. All are welcome to attend. For further info please call (802) 222-5123 or 1-800-69VTPWA.

## HOUSING

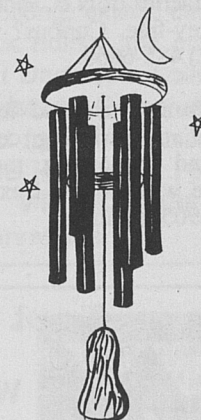
**Gay college student** (32 years old) seeks room to rent starting May 1. Quiet, reliable, non-smoker. Reference available. Call Paul 863-1443.

## NETWORKING

**Attention,** Calling all hibernating Bis, Gays, & Lesbians. too old for Outright but too young for Crones that are dealing with coming out, family, work. Support group now forming. Call Chaz or Deb at 660-3148 or drop in at Pearls coffeehouse from 8-9 pm March 2nd for 1st get together.

**FrontRunners,** the International gay/les/bi athletic group, will serve as the organizational structure for a proposed running and walking club in the Hanover, Lebanon and White River Junction area. It is anticipated we will meet regularly to run and walk in the area, as well as share meals, social, and athletic events. Call Fred at 603/448-3861 or Bill at 802/649-2516

## PURPLE & RAINBOW WINDCHIMES



All proceeds benefit  
the Peace & Justice Coalition

**Peace on Earth Store**  
21 Church St.  
Burlington, Vermont  
863-8326