

Happy Birthday Integrity!



by Bruce H.

Integrity is a fellowship of Gay Episcopalians and their friends. We would welcome you at our celebration of the Holy Eucharist and fellowship the first and third Saturday of each month at 7:55 pm, St. Paul's Cathedral, Two Cherry St., Burlington.

This May, Integrity/Burlington begins its eighth year of existence. What started in 1979 with a small group of people has grown into a vital organization with one of the largest memberships of any Integrity chapter outside a major urban area. We seem to have connected with a deep hunger in the community for spiritual sustenance.

Let us pray that in the coming years Integrity can continue to grow and reach out to more of those in the lesbian and gay community who seek a deeper meaning to their lives.



Lesbian journal thrives in Vermont

by Marianne Milton

Recently, Melanie Kaye/Kantrowitz moved from Maine to the Montpelier area of Vermont, and Sinister Wisdom travelled with her.

Sinister Wisdom is a lesbian feminist journal, which in the ten years since it was founded has published stories, poems, essays, narratives, interviews, plays, reviews and art. It was founded in 1976 by Harriet Ellenberger (aka Desmoines) and Catherine Nicholson; in 1981, Michelle Cliff and Adrienne Rich took over as editors and publishers; and from 1983 until 1984, Michaele Uccella and Melanie co-edited the journal. Now Melanie is the sole editor and publisher, with Gloria Anzaldua, Beth Brant, and Irena Klepfisz serving as contributing editors.

Since Melanie began editing Sinister Wisdom, there has been a strong emphasis on Jewish women's experience: each issue contains some representation of Jewish women's concerns, and the upcoming double issue (#29/30), "The Tribe of Dina," co-edited by Melanie and Irena Klepfisz, is an anthology focused entirely on Jewish women's identity and experience. According to Melanie, Sinister Wisdom differs from other lesbian feminist journals such as Common Lives/Lesbian Lives and Conditions in that it is less focused inside what are commonly seen as the parameters of the feminist and women's movement.

"I am interested in material on the periphery of what I already know," Melanie said.

In a recent exchange of letters in off our backs (October 1985 and

January 1986) Melanie refuted Julia Penelope's assertion that Sinister Wisdom was "once focused on radical lesbian issues."

"Sinister Wisdom remains a radical lesbian journal, offering a radical perspective from (mostly) lesbian writers. We don't print overtly heterosexual material, but we also don't ask writers or artists for names of their lovers or content of their fantasies," Melanie answered. She went on to explain that since lesbians have certain concerns that we share with no others and have other concerns that are not uniquely ours, Sinister Wisdom will cover a broad range of topics and will not "let the definition of radical

lesbian be restricted to repeating what some people said it meant ten years ago."

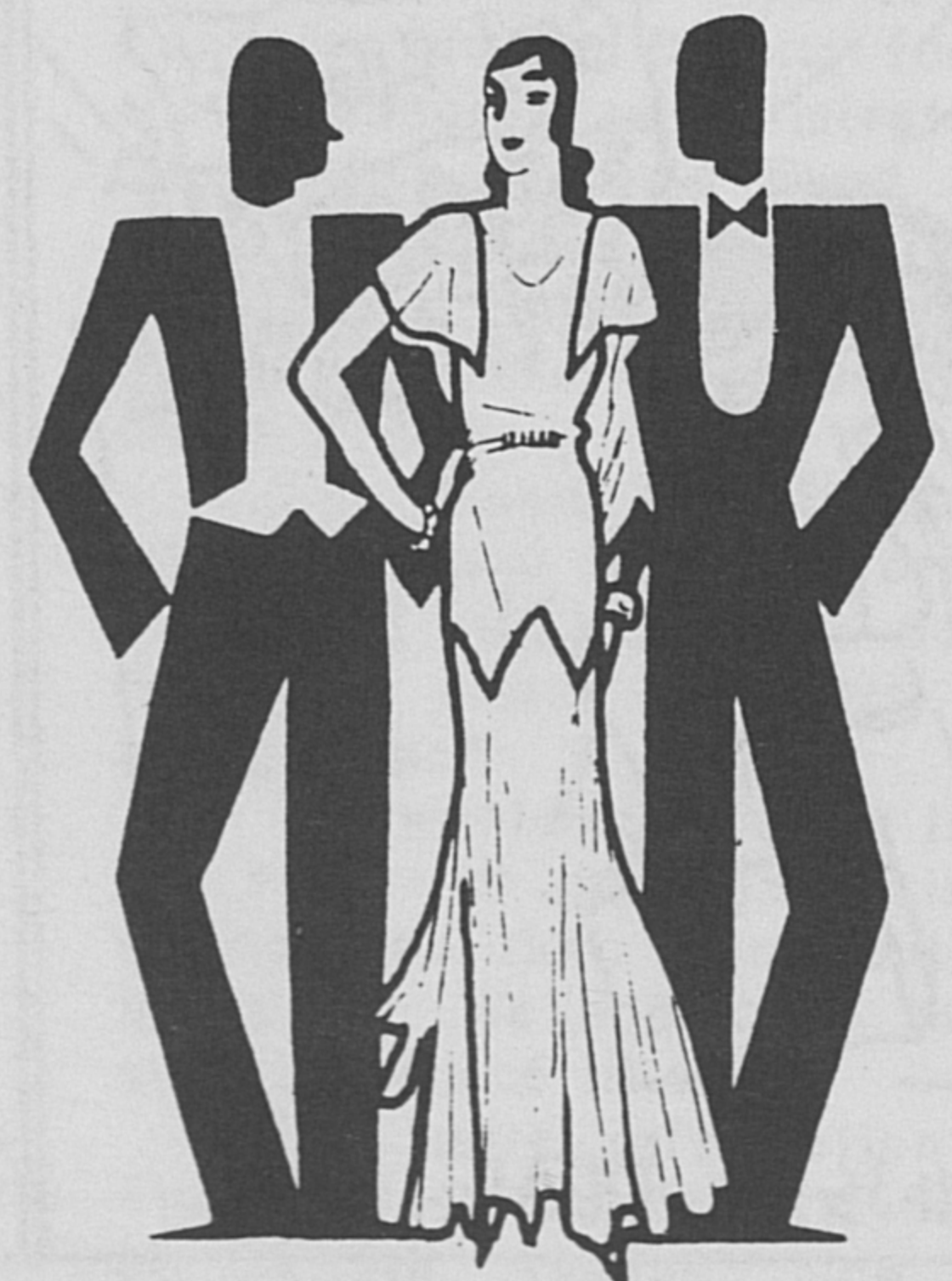
"The Tribe of Dina" differs from other regular issues of Sinister Wisdom in that the policy for this anthology was to include material by women other than lesbians. A similar policy was followed for A Gathering of Spirit, an anthology focused on the writing and art of Native American women, edited by Beth Brant and recently reissued as an expanded second edition.

"The Tribe of Dina" is envisioned by the editors as a means to convey the diversity of Jewish women's experience. It builds on the work

continued, page 9

STEPHEN & BURNS

Taft Corners
Shopping Center
Williston,
Vermont 05495
878-6413



HAIR AND NAIL CARE - COSMETICS