

# calendar: february

To announce an event for our monthly calendar, e-mail it to [calendar@mountainpridemedia.org](mailto:calendar@mountainpridemedia.org), or write us at: PO Box 1078, Richmond, VT 05477.

## Friday 1

**BRATTLEBORO** - Fourth Visual Heart: Art for AIDS Exhibition and Silent Auction. Opening Reception at 5pm. To be held at Collected Works bookstore and Cafe Beyond. Exhibition from February 1 to February 23. Cafe Beyond is located on High Street in Brattleboro. Once you know which art work you want, you can place bids by phone. Collected Works phone number is 258-4900.

**BURLINGTON** - Outright Vermont - Action Committee for Developing our Community (AC/DC) Meeting. 5:30-6:45pm. Youth ages 22 and under are invited to plan upcoming Outright events and activities. Please bring submissions for the zine Reaching Out. Free pizza on the first Friday of the month. Location: 187 St. Paul Street (between King and Maple) in Burlington. FMI: 1-800-GLB-CHAT, [www.outrightvt.org](http://www.outrightvt.org)

**BURLINGTON** - VGSA - Sip and Dine Join VGSA members and friends for dinner out in Burlington. Meet at 135 Pearl at 6:30, then decide on where to dine out.

**BURLINGTON** - Outright Vermont - Peer Social/Support Meeting Friday Night Group. 7-8:30pm. Free & Confidential, open to all GLBTQ youth 22 and under. Location: 187 St. Paul Street (between King and Maple) in Burlington. FMI: 1-800-GLB-CHAT, [www.outrightvt.org](http://www.outrightvt.org)

**BURLINGTON** - Renee - Women's Night Presentations At 135 Pearl. Renee will be demonstrating Henna Tattoos and Body Painting and presenting her Paintings on Slate Exhibit.

## Saturday 2

**PIERMONT, NH** - Gay, Lesbian, Transgender Support Group - Meeting Held the first Saturday of every month, 3-5pm. Non alcoholic, drug free social, come and make friends. Call Brad Jr. for more info at 1-603-272-5815

**WHITE RIVER JCT** - GLBT Night at Panama Jacks. 8pm. Located in the Upper Valley Bowling Lanes complex off Sykes Ave. There is a \$5 cover. FMI: [marinadelamer@yahoo.com](mailto:marinadelamer@yahoo.com)

## Monday 4

**BURLINGTON** - Outright Vermont - Young Women's Group. 6-8pm. All lesbian, bisexual, transgendered women and their women allies, ages 22 and under, are welcome to meet at Outright's Burlington Office for this on-going discussion group. 6-8pm. FMI: call Mariah at 1-800-GLB-CHAT. Location: 187 St. Paul Street (between King and Maple) in Burlington. [www.outrightvt.org](http://www.outrightvt.org)

**RUTLAND** - American Cancer Society - Look Good ... Feel Better Program. 5pm. A community based, free service, provides group cosmetology consults with make-up and skin care tips for cancer patients at Rutland Regional Medical Center. First Monday of each month. Please register in advance by calling 802 265-4757.

## Tuesday 5

**BENNINGTON** - American Cancer Society - Look Good ... Feel Better Program. 1:30pm at the Southwest Medical Center in Bennington. First Tuesday of each month. Please register in advance by calling 802 447-1403 or 802 447-3587

**HANOVER/LEBANON NH** - American Cancer Society - Look Good ... Feel Better Program. 10am at the Norris Cotton Cancer Center, Lebanon, NH. First Tuesday of each month. Please register in advance by calling Doris Watson at 603 448-6417.

## Wednesday 6

**BURLINGTON** - HIV+ Support Group. 5:30pm. Ongoing, confidential, open to anyone living with HIV/AIDS at 361 Pearl St. (Vermont CARES office). Please call before attending first time, or to arrange transportation or childcare. FMI Kara at (800) 649-2437 or (802)863-2437.

**BURLINGTON** - Outright Vermont - Drop-In Center 6-8pm. Open for evening activities - movie nights, discussion groups, sex proud workshops, etc. Location: 187 St. Paul Street (between King and Maple) in Burlington. Info: 1-800-GLB-CHAT, [www.outrightvt.org](http://www.outrightvt.org)

**BURLINGTON** - R.U.1.2. - Movie & Munchies Night. 7-9:30pm. A new monthly tradition starts Wednesday February 6th at the R.U.1.2. Community Center Headquarters. This month's featured film is Different For Girls: a romantic comedic romp about what defines masculinity and femininity. Refreshments provided. Call 860-RU12(7812) for directions or further information.

**MIDDLEBURY** - American Cancer Society - Man to Man Prostate Cancer Support Group. Meets at 4pm in the Ilsley Library on every first Wednesday of the month. FMI: call 800-639-1888. Open to public.

## Thursday 7

**BURLINGTON** - R.U.1.2. - Women's Coming Out Support Group. 6:30-8pm at R.U.1.2. Headquarters. Call 860-RU12 (7812) or visit [www.ru12.org](http://www.ru12.org) for directions or information.

**MIDDLEBURY** - Addison County GLBT Social Group. 8pm at Mr Ups, Bakery Lane. Everyone welcome. We're usually downstairs in the bar section. This is a no-structure informal gathering. Purely social. 8pm until we all go home. FMI Barb - [dozetos@sover.net](mailto:dozetos@sover.net) or 388-8298.

## Friday 8

**BURLINGTON** - Outright Vermont - Action Committee for Developing our Community (AC/DC) Meeting 5:30-6:45pm. See Friday 1 listing for more information.

**BURLINGTON** - VGSA - Sip and Dine. 6:30pm at 135 Pearl. See Friday 1 listing for more information.

**BURLINGTON** - Outright Vermont - Peer Social/Support Meeting Friday Night Group. 7-8:30pm. See Friday 1 listing for more information.

## Saturday 9

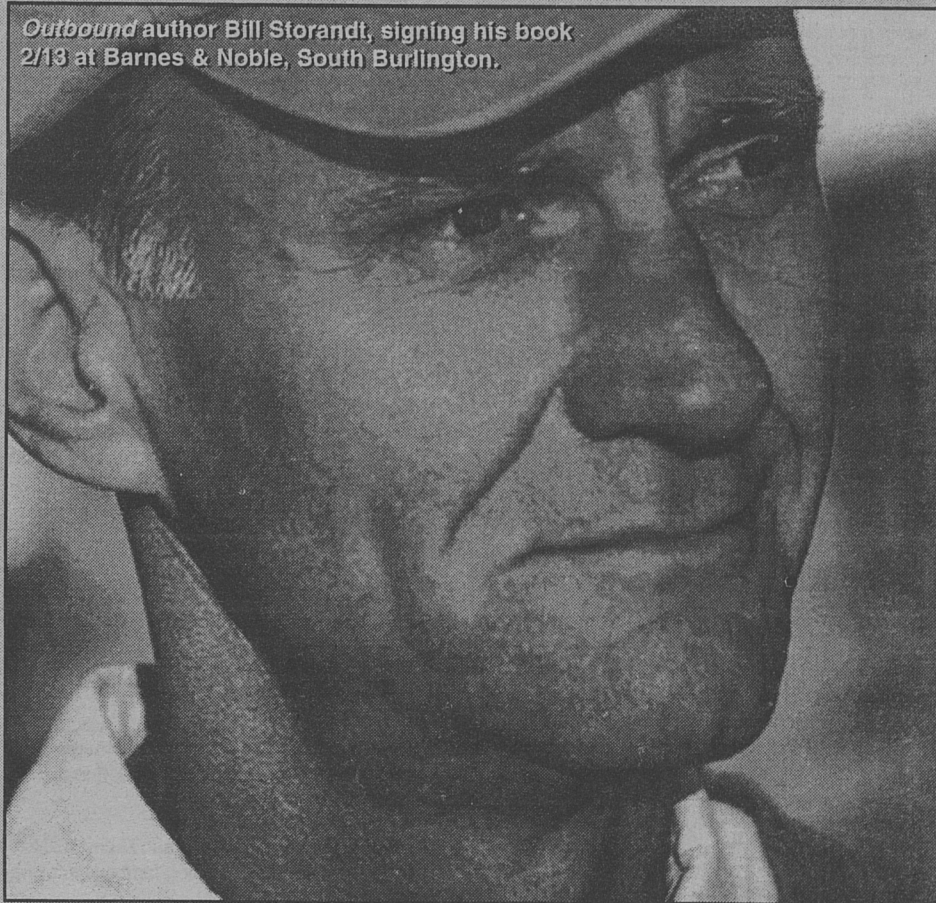
**BENNINGTON/BRATTLEBORO** - Benefit for the AIDS Project of Southern Vermont - Don't Eat Your Heart Out Thanks to many area restaurants in Brattleboro and Bennington, the Project has created an opportunity for fun, food and philanthropy. Here's how it works: grab your sweetheart or get a group of friends together and invite them to join you for a festive dinner at your favorite restaurant. In turn, participating restaurants will donate 10% of their proceeds to the AIDS Project of Southern Vermont. FMI about participating restaurants call 802-254-8263.

**WHITE RIVER JCT** - GLBT Night at Panama Jacks. 8pm. There is a \$5 cover. FMI: [marinadelamer@yahoo.com](mailto:marinadelamer@yahoo.com)

## Sunday 10

**BURLINGTON** - Interweave - Potluck Luncheon for GLBTQ and Friends. First Unitarian Universalist Society of Burlington, 152 Pearl Street. Join us for a potluck luncheon at 12:30pm hosted by Interweave, the Unitarian Universalist group for gay, lesbian, bisexual, transgendered people, their families, friends & heterosexual

Outbound author Bill Storandt, signing his book 2/13 at Barnes & Noble, South Burlington.



allies. Interweave Potlucks are every second Sunday of every month. Everyone is welcome! Come for the service at 11am or the potluck at 12:30pm or both! For more information, contact John Byer at (802) 644-2080.

**BURLINGTON** - R.U.1.2. - Women's Drop-In Social. 4-7pm at R.U.1.2. Headquarters. Call 860-RU12 (7812) or visit [www.ru12.org](http://www.ru12.org) for directions or information.

## Monday 11

**BURLINGTON** - Outright Vermont - Transgender Night. All youth 22 and under interested in transgender issues are welcome to this on going discussion, peer support and activities night at Outright's Burlington Office. This group is led by transgendered youth. Location: 187 St. Paul Street (between King and Maple) in Burlington. Info: 1-800-GLB-CHAT, [www.outrightvt.org](http://www.outrightvt.org)

**WINOOSKI** - American Cancer Society - Look Good ... Feel Better Program. 5:30pm at Appearances in Winooski. Second Monday of each month. Please register in advance by calling 802 655-2000

## Tuesday 12

**BURLINGTON** - Genders R US - Support Group. 6pm. Support group for transgender folks at Vermont CARES, 361 Pearl St. Call before attending first time. FMI: call 800-649-2437 or 863-2437

**MONTPELIER** - The OUTPOST! Outright Vermont and Washington County Youth Service Bureau Peer Social/Support Group 7-8:30pm. Free & Confidential, open to all GLBTQ youth 22 and under. Call us at 1-800-GLB-CHAT or see us on the web at [www.outrightvt.org](http://www.outrightvt.org) for more information or directions.

**WEST LEBANON, NH** - GLBT Reading Group. 7pm at Borders Books & Music. February's book is You're Not From Around Here, Are You? by Louise Blum. All of the GLBT Reading Group selections are discounted 20% and can be found in the Staff Selections area in the front of the store and on the end-cap display in the GLBT section.

## Wednesday 13

**BURLINGTON** - Bill Storandt, author of last year's autobiography *Outbound*, will be at Barnes & Noble in South Burlington for a reading/signing Wednesday, February 13 at 7:00 p.m., and will be featured on Vermont Public Television's Profile on Monday, February 11 at 7:30 p.m., Saturday, February 16 at 4:30 p.m., and Sunday, February 17 at 1:30 p.m.

**BURLINGTON** - Outright Vermont - Drop-In Center 6-8pm. Open for evening activities - movie nights, discussion groups, sex proud workshops, etc. Location: 187 St. Paul Street (between King and Maple) in Burlington. Info: 1-800-GLB-CHAT, [www.outrightvt.org](http://www.outrightvt.org)

**BURLINGTON** - R.U.1.2. - Gayme Night & Potluck. 6-8pm at R.U.1.2. Headquarters. Call 860-RU12 (7812) or visit [www.ru12.org](http://www.ru12.org) for directions or information.

**SOUTH BURLINGTON** - Vermont Community Botanical Garden - Workshop: Landscape Design. 6:30-8:30pm. Charlie Siegchrist, Landscape Designer presents this workshop where you will be looking back and looking forward in your garden. You'll learn how to build on last year's successes and plan improvements for the coming growing season. Location: Conference Room, So. Burlington City Bldg., 575 Dorset Street, So. Burlington. \$5 for members, \$10 for non-members. Call 864-5206 to register.

**SOUTH BURLINGTON** - Barnes & Noble - Reading/Signing by Bill Storandt, author of *Outbound*. 7 pm

## Thursday 14

**BURLINGTON** - R.U.1.2. - Questioning and Coming Out Support Group. Group for lesbian, gay, bi, trans, and questioning adults 23 and up. 2nd and 4th Thursdays of the month, 6:30-8pm at R.U.1.2? Headquarters at 1 Steele St., Suite 113 on Burlington's Waterfront bikepath. The group is open, ongoing, free-of-charge and co-facilitated by supportive health professionals and peers. FMI:(802) 860-RU12 or email [thecenter@ru12.org](mailto:thecenter@ru12.org)

**MIDDLEBURY** - Addison County GLBT Social Group. 8pm at Mr Ups, Bakery Lane. Everyone welcome. We're usually downstairs in the bar section. This is a no-structure informal gathering. Purely social. 8pm until we all go home. FMI Barb - [dozetos@sover.net](mailto:dozetos@sover.net) or 388-8298.

For more detailed, up-to-the-minute listings, check out our website calendar:

[www.calendars.net/cals/oitm](http://www.calendars.net/cals/oitm)