

# The Oldcastle Theatre Company Presents...

## Civil Union

After its May 25 opening at the Bennington Center for the Arts, it will run through Sunday, June 10.

Performances are held Wednesday through Saturday evenings at 8 pm, Wednesday and Saturday at 2 pm and Sunday at 3 pm.

The performance on Sunday, June 3, will be followed by a question-and-answer session with the cast and the playwright.

Tickets are \$24 to \$29, with a student rate of \$10. Group rates are available.

For reservations or more information please call the box office at 802-447-0564.

and frustrations and put them in the play. Some of the characters share my views, others don't."

*Civil Union* will allow audience members to revisit the dialogues between community members and the honest controversy over a major cultural change as they witness a highly political and emotion-driven play. Peterson explains his need to write the play: "My wife and I were struck with the options we have as a heterosexual couple. We can live together or not. Get married or not. Gay and lesbian couples didn't have as many options. That affects the entire community."

The Oldcastle Theatre Company begins its spring season in Bennington on May 25 with *Civil Union*. Nine actors will play 32 characters whose lives are affected by the controversy over the legislature's decision to legalize Civil Unions. The cast includes such Oldcastle veterans as Willy Jones and Daryl Kenney, and Broadway veterans Pamela Blair and Richard Council.

*Civil Union* - Producing Artistic Director Eric Peterson's project for the past 18 months - focuses on a gay

couple, a lesbian couple, a young newspaper reporter and his girlfriend who are considering marriage, and a minister and his wife as they struggle to understand how homosexuality and God relate. It deals with Vermont residents from all sides of the community - natives, flatlanders, the white and blue collared. As Peterson says, "I know these people. They are my neighbors, friends, family. I've spoken about the issue with many, many people. I've collected [their] thoughts, feelings, opinions, fears, hopes, dreams

## How to bulk up

...at the Onion River Co-op

- 1 Visit the Co-op's bulk department.
- 2 Choose from our wide variety of natural, highest-quality bulk foods.
- 3 Buy as little or as much as you want.

274 N. Winooski Ave.  
Burlington, VT.  
802-863-3659  
Open 9-9  
every day.



Come see what the Flynn's resident professional theatre company is up to

VERMONT  
STAGE

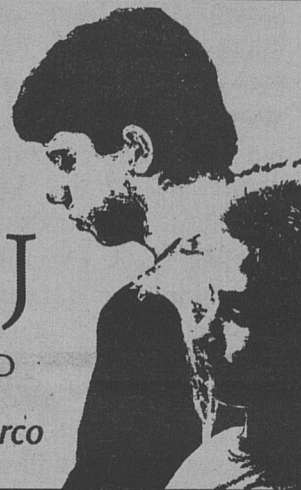
presents

## Shakespeare's R & J

THE GREATEST LOVE STORY EVER TOLD

In a dynamic new adaptation by Joe Calarco

APRIL 25 - MAY 6 AT FLYNNSPACE  
FOR TICKETS CALL 86-FLYNN



## GLBTV

### CHERIE AND YOLANDA

Channel 15  
Tuesdays and Sundays at 10 pm,  
Saturdays at 12 am Adelphia

### IN THE LIFE

Vermont Public Television

*Cultural Legacies: From Preservation to Performance*  
Check Local Listings for Dates and Times

- St. Johnsbury WVTB Channel 20
- Rutland WVER Channel 28
- Burlington WETK Channel 33
- Windsor WVTA Channel 41
- Manchester W36AX Channel 36
- Bennington W53AS Channel 53

This month's episode is hosted by comedian Kate Clinton. Billy Tipton, a transgendered jazz bandleader, is profiled in the segment, *Maverick Musician*. Actors Lori Phillips and Elaine

Valby perform in *Patience & Sarah*, the first American lesbian opera based on a true story. In the segment *Same Sex Shakespeare*, actors Greg Shamie and Daniel Shore perform in *R & J*, an all-male adaptation of the classic *Romeo & Juliet*.

### NEWS AND VIEWS FROM THE VT STATE HOUSE

- Barre Channel 7  
Wednesday 7 pm and Thursday 9 am & 12 pm
- Burlington Channel 15 and 17  
Check local listings
- Colchester Channel 15  
Monday 10:30 am, Wednesday 10 pm, and Thursday 7:30 pm
- Manchester Channel 15  
Check local listings
- Middlebury Channel 15  
Monday 11:30 am, and Thursday 11:30 am & 9:30 pm

- Montpelier Channel 15  
Wednesday 7 pm, and Thursday 1 pm
- Newport Channel 14  
Monday through Friday 2 pm and 7 pm
- Norwich  
Check local listings
- Richmond Channel 3  
Monday 8 pm
- Rutland Channel 15  
Check local listings
- St. Albans Channel 10  
Check local listings
- St. Johnsbury Channel 7  
Check local listings
- Waitsfield Channel 44  
Monday through Friday 12 pm & 5 pm

### THE VERMONT RAINBOW CONNECTION

- Burlington Channel 15  
Friday 9 pm Adelphia
- Barre Channel 7  
2nd and 4th Mondays of the month at 8:30 pm Helicon

- Bennington, Pownal, Shaftsbury, Woodford, Hoosick Falls, NY  
Call 802-442-8868 for air days/times CA-TV
- Brattleboro Channel 8  
Call 802-257-0888 for air days/times BCTV
- Enosburg, Berkshire, Richford Channel 15  
1st and 3rd Sundays of the month at 8 pm WENO
- Middlebury, East Middlebury, Weybridge  
Call 802-388-3062 for air days/times MCTV
- Montpelier, Waterbury, Randolph Channel 15  
2nd and 4th Friday of the month at 7:30 pm Adelphia
- Richmond, Jericho, Underhill Channel 3  
Call 802-434-2550 for air days/times MMCTV
- Woodstock, Plymouth, Ludlow Channel 13  
Friday 9 pm Adelphia