

# Drag Ball 2001

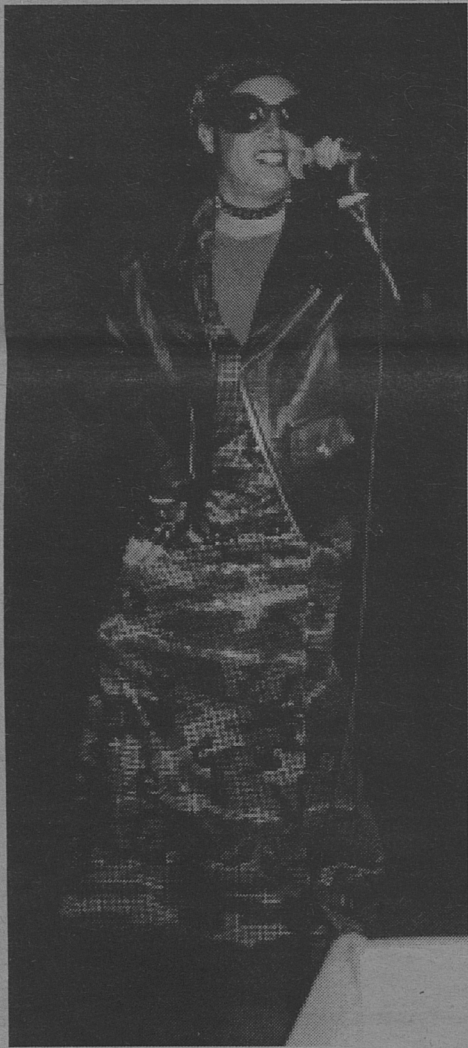
Photo: Andrew McIrath



*Sister Phyllistine*



*Flora d'Luna*



*Rosa de la Montaña*



*Daisy & Brick Hause*



*... and a final toast to the evening.*

Mountain Pride Media is  
**OUT...**

And coming to see you!

The next stop on the  
2001  
Green Mountain Tour:  
**SOUTH ROYALTON, VT**  
**Saturday, March 24**  
at the Chase Community Center on the  
campus of the Vermont Law School  
Hosted by The Alliance and Professor Greg Johnson

## 1 - 3 PM WRITING WORKSHOP

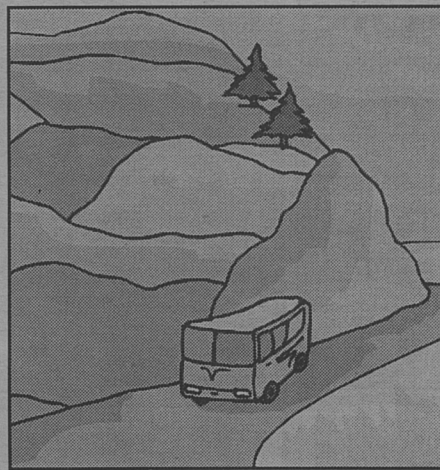
Join Editor of *Out in the Mountains*, Jason Whipple, in a workshop designed to fine-tune your writing skills. From news writing to more informal ways of written communication, a variety of styles will be explored.

## 4 - 6 PM RECEPTION

This opportunity to learn about the services we offer to the GLBT community will be hosted by Mountain Pride Media. Enjoy great food and company as we entertain questions and suggestions on how to offer you the best service from our organization.

We need volunteers to help us with food, make local contacts, create invitations, and to assist with the set up and break down of this event.

Contact us at  
editor@mountainpridemedias.org,  
or 802-434-6486 to RSVP, volunteer,  
or get more information  
about the tour.



The Green Mountain Tour is made possible by a generous grant from the Green Mountain Fund for Popular Struggle.

## DIRECTIONS TO THE CHASE COMMUNITY CENTER ON THE CAMPUS OF VERMONT LAW SCHOOL:

**From the North:**  
Take Exit 3 (Bethel) off I-89, turn left at the end of the exit ramp (towards Royalton) and right at the next stop sign onto Route 14 South. Follow Route 14 through Royalton to the intersection with Route 110; turn right and travel over the iron bridge to the VLS campus. After 1/10th of a mile, turn right in front of the Vermont Law School sign and park in the parking lot. Enter Oakes Hall, go upstairs, and follow the hallways to the Chase Community Center.

**From the South:**  
Take Exit 2 (Sharon) off I-89 and turn left at the end of the exit ramp. At the next stop sign, turn right onto Route 14 North. Follow Route 14 to the intersection with Route 110, then turn left and travel over the iron bridge to the VLS campus. After 1/10th of a mile, turn right in front of the Vermont Law School sign and park in the parking lot. Enter Oakes Hall, go upstairs, and follow the hallways to the Chase Community Center.